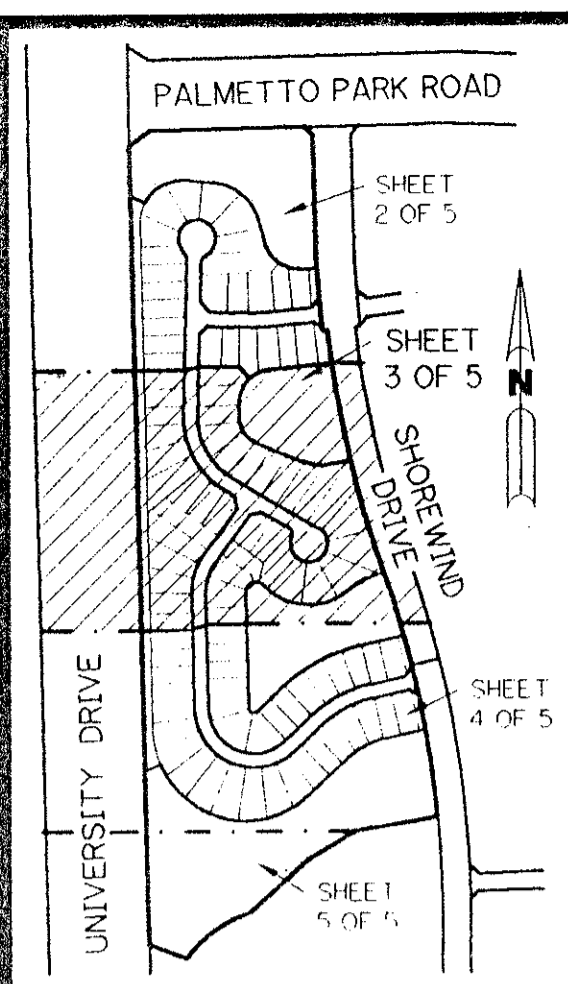


# BOCA WINDS - PARCEL G

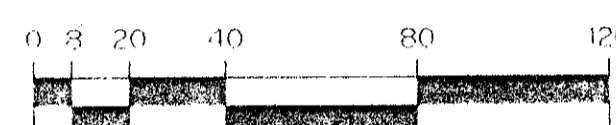
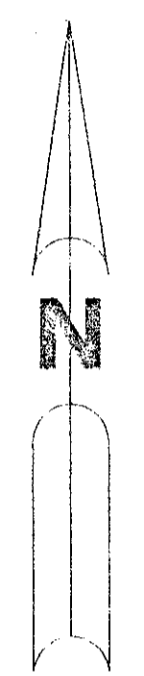
A PART OF THE BAY WINDS PLANNED UNIT DEVELOPMENT  
A PARCEL OF LAND LYING IN SECTIONS 22 AND 27, TOWNSHIP 47 SOUTH,  
RANGE 41 EAST, AND BEING A REPLAT OF A PORTION OF TRACTS 15 AND 16, FLORIDA FRUITLANDS  
COMPANY'S SUBDIVISION NO. 2, AS RECORDED IN PLAT BOOK 1, PAGE 102,  
PUBLIC RECORDS OF PALM BEACH COUNTY, FLORIDA.

SHEET 3 OF 5 JANUARY, 1994



KEY MAP

N.T.S.



SCALE: 1" = 40'



THIS INSTRUMENT PREPARED BY  
PERRY C. WHITE P.L.S. 4213 STATE OF FLORIDA  
LAWSON, NOBLE AND ASSOCIATES, INC.  
ENGINEERS PLANNERS SURVEYORS  
WEST PALM BEACH, FLORIDA

- LEGEND:**
- - PERMANENT REFERENCE MONUMENT, PLS #4213
  - △ - PERMANENT CONTROL POINT, PLS #4213
  - Δ - DELTA ANGLE
  - A - ARC LENGTH
  - D.E. - DRAINAGE EASEMENT
  - F.F.L.C. SUB. NO. 2 - FLORIDA FRUITLANDS COMPANY'S SUBDIVISION NUMBER 2 (P.B. 1, PG. 102)
  - L.A.E. - LIMITED ACCESS EASEMENT
  - L.E. - LANDSCAPE EASEMENT
  - L.M.E. - LAKE MAINTENANCE EASEMENT
  - NR - NOT RADIAL
  - O.R. - OFFICIAL RECORD
  - O.R.B. - OFFICIAL RECORD BOOK
  - O.S. - OPEN SPACE
  - P.B. - PLAT BOOK
  - PGS. - PAGES
  - P.B. CO. - PALM BEACH COUNTY
  - P.L.S. - PROFESSIONAL LAND SURVEYOR
  - P.U.D. - PLANNED UNIT DEVELOPMENT
  - R - RADIUS
  - R.O.W. - RIGHT-OF-WAY
  - U.E. - UTILITY EASEMENT

**PET. 80-47**  
**ROADS \$1139.00 PER UNIT**

**W/ESCROW AGMT. FOR**  
**ROADS, SCHOOLS + PARKS**  
11/194

**0201-014**

**72/78**

PARCEL G  
SUBDIVISION \* BOCA WINDS  
BOOK 72 PAGE 78  
FLOOD ZONE Ab-1 FLOOD MAP #100B  
QUAD # 69 ZONING RT  
SE 80-47  
PUD NAME BAY WINDS  
ZIP CODE 33433

732 778

L.W.D. EASEMENT  
QUIT CLAIM DEED PER  
O.R.B. 5053, PAGE 81  
PER O.R.B. 553, PAGE 881

NORTHWEST CORNER  
SECTION 27-47-41  
FOUND P.B. CO. BRASS  
DISC IN CONCRETE

UNIVERSITY DRIVE  
(160' RIGHT-OF-WAY)  
(PER O.R.B. 3600, PGS. 1624-1626)

SHOREWIND DRIVE  
(80' RIGHT-OF-WAY)  
(P.B. 1, PGS. 68-75)

BOCA WINDS - PARCEL E  
(P.B. 72, PGS. 68-75)

BOCA WINDS - PARCEL E  
(P.B. 72, PGS. 68-75)

**BOCA WINDS - PARCEL G**